



DOORS
FOR
A GOOD
ENTRY

TALMET

ALUMINUM PANEL DOORS

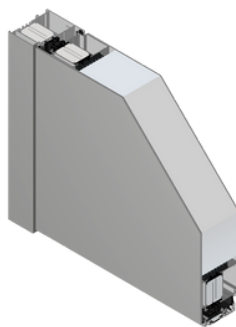




- 1** Aluminium door, 75mm thick with an overlay panel
- 2** Door frame
- 3** Q10 handle 1800mm long
- 4** Stainless steel door handle
- 5** INOX application aligned with door panel surface
- 6** Aluminium sill 15mm high
- 7** Glazing
- 8** WALA WR roll hinges, silver colour
- 9** Standard key cylinder
- 10** Groove

CLADDING

- door of dimensions 1200 x 2400 mm
- double side overlay panel
- Genesis 75 mm system profiles
- aluminum sill 15 mm
- glazing pack 2 - chamber, 3 - pane (types: transparent, reflex, ornament, one-way mirror, sand blasted).
- Anti-burglary glazing VSG 44.4
- 3 roll hinges WalaWR (height exceeding 2200 mm - additional 4th hinge) .
- Triple lock GU, automatic.
- double side door handle, stainless steel or a handle, one or double sided, Q45, Q10, P45, P10 dimensions 300-1800 mm. In case of the option with the handle, normally the ring-type escutcheons plate
- any color from the following palettes: RAL, IGP, Tiger
- class C cylinders



GENESIS 75 MM (STANDARD FOR OVERLAY PANELS)

installation depth 75 mm
 3 chamber with a thermal spacer
 3-seal - innovative sealing solutions
U factor from 0,8 [W / m 2 * K]
 very good thermal insulation



STAR 90 MM (PREMIUM OPTION, PAYABLE - ONLY FOR OVERLAY PANELS)

installation depth 90 mm
 3 chamber with a thermal spacer perfect statics of the door
 additional panel in the glazing pack, aluminum sill 20 mm
U factor from 0,7 [W / m 2 * K]
 great thermal insulation



U_d
0,9
W/m²*K

MILLO-04

Visualized:

Color: RAL 9005

Handle: Q10 stainless steel. L: 1200mm

Double side plain.

Rosette integrated on the outside of stainless steel.



U_d
0,9
W/m²*K

MILLO-05

Visualized:

Color: RAL 9016

Tirant: Q10 stainless steel L: 1000mm

Grooves milled only from the outside.

Rosette integrated on the outside of stainless steel.



U_d
0,9
W/m²·K

MILLO-11

Visualized:

Color: RAL 7016

Milk glass with translucent stripes.

Handle: Q10 stainless steel, L : 1200 mm

Grooves milled only from the outside.

Rosette integrated on the outside of stainless steel.



U_d
0,9
W/m²·K

MILLO-12

Visualized:

Color: RAL 7022 Inox

Milk glass with translucent stripes.

Handle: Q10 stainless steel, L : 1200 mm

Grooves milled only from the outside.

Rosette integrated on the outside of stainless steel.



U_d
0,9
W/m²*K

MILLO-16

Visualized:

Color: RAL 7042

Milk glass.

Handle: Q10 stainless steel, L : 1200 mm

Double side plain.

Rosette integrated on the outside of stainless steel.



U_d
0,9
W/m²*K

MILLO-17

Visualized:

Color: RAL: 6008

Milk glass.

Handle: Q10 stainless steel, L : 1200 mm

Double side plain.

Rosette integrated on the outside of stainless steel.



U_d
0,9
W/m²·K

MILLO-22

Visualized:

Color: RAL: 9005

Door handle: H1 Inox

Grooves milled only from the outside.

Rosette integrated on the outside of stainless steel.



U_d
0,9
W/m²·K

MILLO-24

Visualized:

Color: RAL 9005

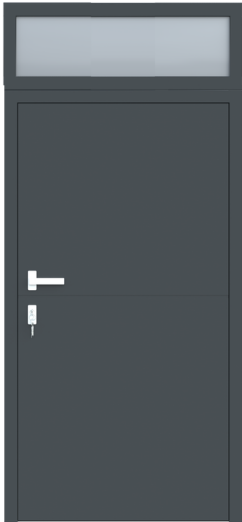
Milk glass with translucent stripes.

Door handle: H1 black

Grooves milled only from the outside.

Rosette integrated on the outside of stainless steel.

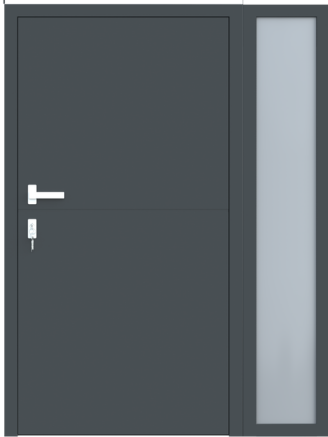




1 X FANLIGHT

LIGHT GLAZING

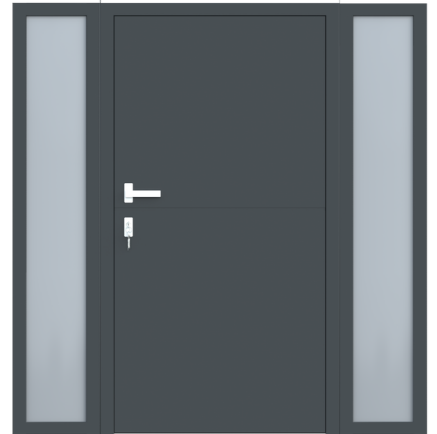
- transparent glazing
- reflex glazing
- ornament glazing
- one-way mirror glazing
- sand blasted glazing



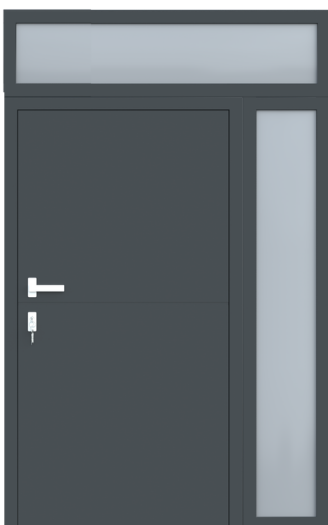
1 X RIGHT SIDELIGHT



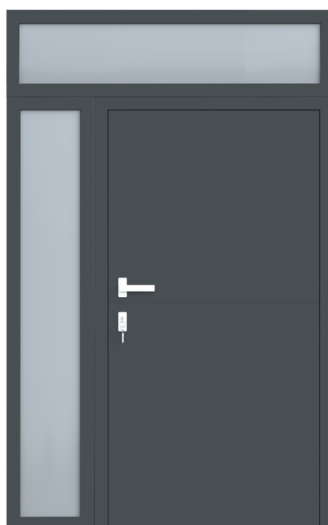
1 X LEFT SIDELIGHT



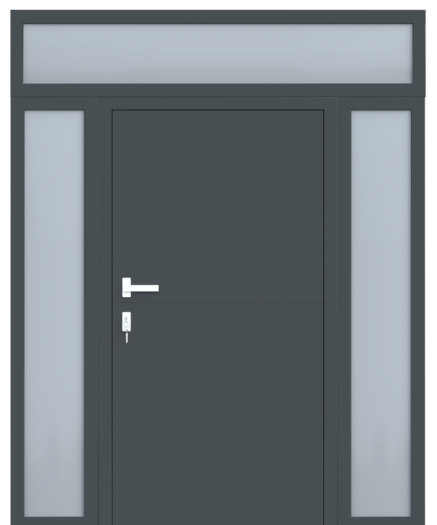
2 X SIDELIGHT



1 X RIGHT SIDELIGHT
+ FANLIGHT



1 X LEFT SIDELIGHT
+ FANLIGHT



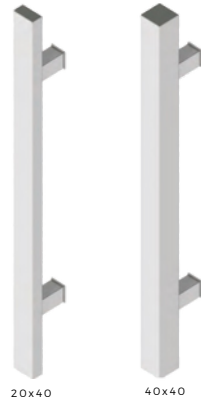
2 X SIDELIGHT
+ FANLIGHT

HANDLES AND DOOR HANDLES - STANDARD

Q45



Q10



P45



P10



HANDLE Q45 AND Q10

Length standard: 300-1800mm
Colors: stainless steel or RAL

Length non-standard : 1801-2200 mm - extra payment acc. to the extra payment table (height exceeding 1800mm - only 40x40 variant)

HANDLES P45 AND P10

Length standard: 300-1800mm
Colors: stainless steel or RAL

Length non-standard : 1801-2200 mm - extra payment acc. to the extra payment table (height exceeding 1800mm - only Ø40 variant)

Door handle H1



Door handle H2



DOOR HANDLES H1 AND H2

Material: aluminum
Colors: Inox or RAL

Door handle H6

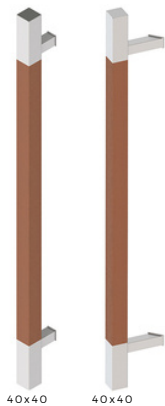


DOOR HANDLE H6

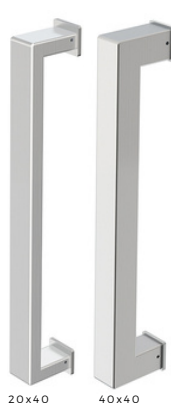
Material: aluminum Long or short escutcheons
Colors: Inox or RAL

TIRANTS - OPTIONS SUPPLÉMENTAIRES

Q10D Q45D



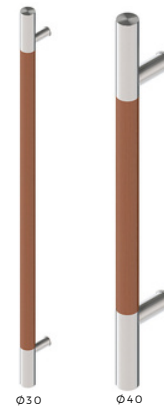
Q90



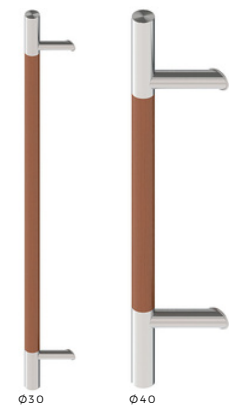
Q90D



P10D



P45D



HANDLES Q10D ET Q45D

Length: 1000, 1200, 1600mm

HANDLES Q90

Length: 300-800mm
Length: 1000-2200mm

HANDLE Q90D

Length: 800-1600mm

HANDLES P10D AND P45D

Length: 600-1600mm

DQ10 DQ45-S2



DQS



PS PS-W



KA-1



HANDLES DQ10 AND DQ45-S2

Length: 300-800mm
Length: 1000-2200mm

HANDLE DQS

Length: 960mm

HANDLES PS AND PS-W

Length: 1500-2400mm

HANDLE KA-1

Length: 800-2000mm

ADDITIONAL OPTIONS



HINGE-OPEN



HINGE-CONCEALED



FINGERPRINTS
READER



NUMERICAL
KEYBOARD



TRANSPONDER



MICRO-SWITCH



ARM DOOR CLOSER



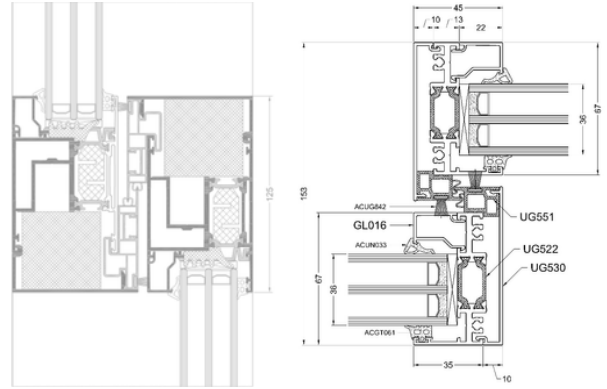
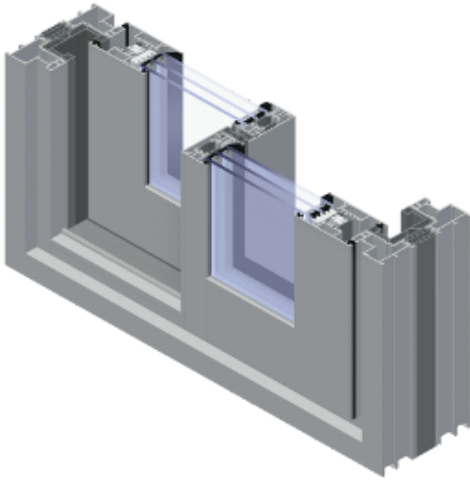
DOOR CLOSER OPEN
WITH A RAIL

NON STANDARD OPTIONS

- STAR 90mm system
- Roll hinges of the insert panel doors
- 3 concealed hinges (please inquire about feasibility)
- Electric engine
- Wood-effect color
- Security bolts 2 pcs.
- An insert with a knob, from the inside
- Electric door strike
- Round door handle, stainless steel
- Concealed door closer, with a lock



SYSTEM SLIDING



VISOGLIDE

Possible combinations of two, three, four and six-piece combinations based on a two- or three-track frame

Lightweight sliding door system with extremely thin profiles.

Ideal solution for e.g. winter gardens.

Thermal insulation: U_f^* from 2,1 W/m²K

ULTRAGLIDE

Max. dimensions of the structure:

- Sash height $H_s=3300$ mm
- Sash width $B_s=3200$ mm

Frame: 3, 5 and 7- chamber system

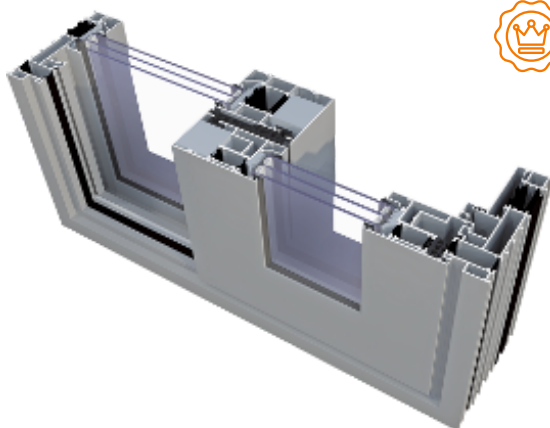
Possible combinations: two, three and four-element combinations on the basis of the two-chamber system.

System adapted to the latest requirements in the field of thermal insulation, aesthetics and safety.

Thermal insulation: U_f^* from 1.45 W/m²K.

SYSTEM	MATERIAL	DEPTH OF FRAME	DEPTH OF SASH	THICKNESS OF GLAZING	WEIGHT OF SASH	TYPES OF DOOR
Visoglide	Aluminium	118/142/184mm	51mm	6-36mm option Monorail: 18-60mm	up to 250kg (slide) to 200kg (lift & slide)	slide, lift & slide
Ultraglide	Aluminium	from 153 mm to 239 mm	67mm	14-52mm	to 250kg (sliding) to 400kg (lift & slide)	slide, lift & slide

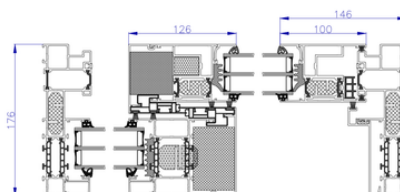
* U_f factor determines heat flow via profiles. The lower U_f value the better thermal insulation
 * Thermal insulation depends on combination of a profile and panel thickness.



MONORAIL - option for the system Ultraglide and Visoglide

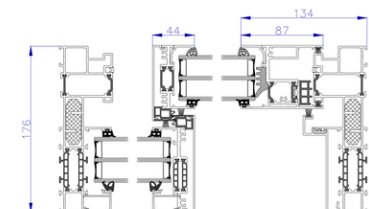
HST ULTRAGLIDE MONORAIL

- Excellent tightness
- Classic design
- Excellent statics



HST ULTRAGLIDE MONORAIL SLIM

- Narrow center mullion (ideal for narrow HSTs)
- Modern design
- More light



COLOR PALLETS:

-Door colors are based on pallets provided by the system owner - Aliplast.

We have a few color pallets:

- mat
- glossy
- light structure I G P S 2
- Full structure S T

Note Colors of the entrance doors may deviate slightly from colors of profiles.

It is possible to order different colors of the door frame and the door sash. This option is free of charge.

The manufacturer shall not charge two color options (inside and outside color of door)

RAL

- Bottle green, fiery red, or classic anthracite? Let your home have its character at the first glance.

Standard color includes any color from the RAL palette.



WOOD-EFFECT COLOR

- Aliplast Wood Colour Effect palette includes 16 woodgrain colors : golden oak, walnut, mahogany, swamp oak, beech, pine, sienna P L, sienna rosso, winchester, golden cherry, wenge, dark mahogany, classic golden oak,



PRICES:

- Prices in the price list are net.
- Add the VAT tax to the prices acc. to valid rates.
- Advance payments and terms are established in terms & conditions of the cooperation.
- The price list does not constitute an offer in the light of the Civil Code.
- The price list is binding in the area of Poland.

REALIZATIONS:

- Non-standard orders are subject to individual pricing.
- Orders are completed after an advance payment has been made.
- Orders are completed within 6-8 weeks. Detailed term is determined in the order confirmation
- Talmet S . C . Company reserves its right to all provided products till the entire payment has been made.

GUARANTEE

- Delivered products are defect free.
- Products for residential use have a 5-year guarantee covering aluminum joinery, varnish and woodgrain coating and a 1-year guarantee on accessories (hinges, handles, locks, handles, door closers).
- Products for public use have a 2-year guarantee for joinery and a 1-year guarantee for accessories. It is possible to extend the guarantee from 2 to 5 years on individual conditions.
- A condition to use the guarantee is a purchase evidence document.
- A way the guarantee is performed depends on the manufacturer. It can repair the complained product, replace it or reduce the price.

THE GUARANTEE SHALL NOT COVER:

- Mechanical damage,
 - Damage caused by improper use and maintenance.
 - Structural changes made by the customer without manufacturer's approval.
 - Repairs carried out by persons not authorized by the manufacturer.
 - Visible defects such as mechanical damages, scratches on the profile and glass.
- The purchaser is obliged to report any defects such as mechanical damage, scratches on the profile and glass upon receipt of the goods

WASHING AND USE

- Wash the door once a year at least.
- Use warm, clean water with a gentle detergent and cotton cloth.
- Neither use the water steam to wash the surface nor strong acid or alkaline detergents.
- Do not use organic solvents with ketones, alcohols or chlorine since they may react with the aluminum
- Powder coats are not resistant to mechanical damages caused by abrasive materials
- Too long lasting protective tapes may cause strong adherence to the powder coat and may result in impossibility to remove the tapes without damaging the powder coats.

NOTE:

General commercial terms & conditions:
www.talmet.pl



ABOUT US

More than 30 year experience in the field of aluminum joinery production has enabled us to implement solid standards.

Our special attention is paid to

- thermal issues, hence, we focus on energy saving solutions,
- high quality materials and professional machine park as well as
- aesthetics.

HIGH QUALITY

Perfect appearance and reliability?
We know how to ensure this combination!

We design aluminum doors taking care for every detail.
At every stage of production we care for high precision and high quality.

Are you a distributor looking for a trust worthy manufacturer?
We are for you!

OUR CLIENTS

The offer is also addressed to dealers of window & door joinery looking for professional cooperation characterized by:

- High customer service quality
- Punctuality
- Guarantee service and post-guarantee service
- Professional consultancy
- Production adjusted to individual needs.



TALMET

TALMET S.C. KAMIL PUCHAŁKA, ZUZANNA PUCHAŁKA
www.talmet.eu

COPYRIGHT BY TALMET S.C.
KAMIL PUCHAŁKA, ZUZANNA PUCHAŁKA
